

# 2024 **BEST SELLERS**

ASI 87188  
PPAI 254687  
SAGE 67383  
UPIC SHOWDOWN

YOUR TRUSTED SOURCE FOR 25 YEARS



# TABLE COVERS

### When choosing a table cover have you considered...

- How often will you be using your table cover?
- Does your throw need to cover all four sides of the table, or would you like an open back?
- Do you want a logo printed on the front, or would you like a full-color design that covers the entire throw?

## 28 STOCK THROW COLORS

<b>LEMON</b> PMS 109	<b>RED</b> PMS 201	<b>PURPLE</b> PMS VIOLET	<b>LIME GREEN</b> PMS 375
<b>YELLOW</b> PMS 1235	<b>BURGUNDY</b> PMS 504	<b>AQUAMARINE</b> PMS 2231	<b>EMERALD</b> *
<b>MANGO</b> PMS 1375	<b>FLAMINGO</b> PMS 1767	<b>COBALT</b> *	<b>SHAMROCK</b> PMS 361
<b>ORANGE</b> PMS 1505	<b>HOT PINK</b> PMS 219	<b>BLUEBERRY</b> PMS 647	<b>HUNTER GREEN</b> PMS 350
<b>PEACH</b> PMS 162	<b>MULBERRY</b> PMS 683	<b>ROYAL BLUE</b> PMS 661	<b>HAZELNUT</b> PMS 7575
<b>CHERRY</b> *	<b>GRAPE</b> PMS 268	<b>NAVY BLUE</b> *	<b>BROWN</b> PMS 476
			<b>WHITE</b> *
			<b>GRAY</b> PMS 422
			<b>CHARCOAL</b> PMS 425
			<b>BLACK</b> *

PMS colors are for reference only and may vary slightly from actual color.



- Full-Color Front Only**
  - Simple to complex graphics
  - Vector and raster art accepted; imprinted on front only
  - Available in stock fabric colors only
  - Maximum artwork size requirements apply
  - Large maximum imprint area for more graphic coverage
  - Fold and store in included poly bag



- Full-Color Full-Bleed**
  - Simple, complex and photographic graphics
  - Vector and raster art accepted
  - Art is dye sublimated on white fabric only
  - Full-color artwork can be printed across the entire throw
  - No artwork size requirements
  - Fold and store in included poly bag



### GOOD

#### LAZERLINE THROW

These cost-effective throws are laser-cut for a crisp finished edge.

- Available in full-color front only and full-color full-bleed
- Heat-treated edges will not fray or unravel
- Available in 3-sided or 4-sided throw styles
- Polyester poplin
- Machine-washable and wrinkle-resistant
- Flame retardant certified for exhibit hall use



#### Full-Color Front Only

Item #	Description	1	2-5	6-11	12-24
108213	6' LazerLine 3-Sided Throw	170.60	148.40	139.90	128.00
108214	8' LazerLine 3-Sided Throw	189.30	164.70	155.20	142.00
108201	6' LazerLine 4-Sided Throw	189.30	164.70	155.20	142.00
108202	8' LazerLine 4-Sided Throw	208.00	181.00	170.60	156.00

Stock fabric colors with full-color artwork printed on front. USD MSRP (C)  
 Artwork cannot exceed maximum size requirements.

Description	Table Size	Front Only Graphic Size	Product Wt. (3-Sided / 4-Sided)
6'	72"W x 29"H x 29.75"D	64"W x 25"H	2 lbs. / 2.5 lbs.
8'	96"W x 29"H x 29.75"D	64"W x 25"H	2.5 lbs. / 3 lbs.

#### Full-Color Full-Bleed

Item #	Description	1	2-5	6-11	12-24
108216	6' LazerLine 3-Sided Throw	170.60	148.40	139.90	128.00
108217	8' LazerLine 3-Sided Throw	189.30	164.70	155.20	142.00
108204	6' LazerLine 4-Sided Throw	189.30	164.70	155.20	142.00
108205	8' LazerLine 4-Sided Throw	208.00	181.00	170.60	156.00

White fabric fully dye sublimated with full-color artwork. USD MSRP (C)

Description	Table Size	Full-Bleed Graphic Size	Product Wt. (3-Sided / 4-Sided)
6'	72"W x 29"H x 29.75"D	View Online Template	2 lbs. / 2.5 lbs.
8'	96"W x 29"H x 29.75"D	View Online Template	2.5 lbs. / 3 lbs.

Production Lead Time: 2 days from final proof approval



Laser-cut edges for a clean look.



## ECONOMY TABLE THROW

The open-back design of this throw gives you legroom and quick access to anything you store beneath the table.

- Offers a large maximum imprint area for more graphic coverage on full-color front only throws
- Draped corners
- Polyester poplin
- Machine-washable and wrinkle-resistant
- Flame retardant certified for exhibit hall use



### Full-Color Front Only

Item #	Description	1	2-5	6-11	12-24
106045	4' Economy Throw	163.60	142.30	134.20	122.70
106002	6' Economy Throw	229.00	199.20	187.80	171.80
106014	8' Economy Throw	254.25	221.25	208.50	190.75

Stock fabric colors with full-color artwork printed on front. Artwork cannot exceed maximum size requirements. USD MSRP (C)

Description	Table Size	Front Only Graphic Size	Product Wt.
4'	48"W x 29"H x 29.75"D	40"W x 25"H	1.25 lbs.
6'	72"W x 29"H x 29.75"D	64"W x 25"H	2 lbs.
8'	96"W x 29"H x 29.75"D	64"W x 25"H	2.5 lbs.

### Full-Color Full-Bleed

Item #	Description	1	2-5	6-11	12-24
106042	4' Economy Throw	163.60	142.30	134.20	122.70
106010	6' Economy Throw	229.00	199.20	187.80	171.80
106022	8' Economy Throw	254.25	221.25	208.50	190.75

White fabric fully dye sublimated with full-color artwork. USD MSRP (C)

Description	Table Size	Full-Bleed Graphic Size	Product Wt.
4'	48"W x 29"H x 29.75"D	View Online Template	1.25 lbs.
6'	72"W x 29"H x 29.75"D	View Online Template	2 lbs.
8'	96"W x 29"H x 29.75"D	View Online Template	2.5 lbs.

Production Lead Time: 2 days from final proof approval



8' full-color front only shown in gray

6' full-color full-bleed



Covers three sides of the table with a 9" overhang in back.



Underside of material is blank.

## BETTER

## STANDARD TABLE THROW

Our most popular table throw is elegant in its simplicity.

- Covers four sides of the table, viewable from all sides
- Offers a large maximum imprint area for more graphic coverage on full-color front only throws
- Draped corners
- Polyester poplin
- Machine-washable and wrinkle-resistant
- Flame retardant certified for exhibit hall use



### Full-Color Front Only

Item #	Description	1	2-5	6-11	12-24
109105	4' Standard Throw	176.20	153.30	144.50	132.20
109002	6' Standard Throw	254.25	221.25	208.50	190.75
109014	8' Standard Throw	279.25	243.00	229.00	209.50

Stock fabric colors with full-color artwork printed on front. Artwork cannot exceed maximum size requirements. USD MSRP (C)

Description	Table Size	Front Only Graphic Size	Product Wt.
4'	48"W x 29"H x 29.75"D	40"W x 25"H	1.5 lbs.
6'	72"W x 29"H x 29.75"D	64"W x 25"H	2.5 lbs.
8'	96"W x 29"H x 29.75"D	64"W x 25"H	3 lbs.

### Full-Color Full-Bleed

Item #	Description	1	2-5	6-11	12-24
109106	4' Standard Throw	176.20	153.30	144.50	132.20
109010	6' Standard Throw	254.25	221.25	208.50	190.75
109022	8' Standard Throw	279.25	243.00	229.00	209.50

White fabric fully dye sublimated with full-color artwork. USD MSRP (C)

Description	Table Size	Full-Bleed Graphic Size	Product Wt.
4'	48"W x 29"H x 29.75"D	View Online Template	1.5 lbs.
6'	72"W x 29"H x 29.75"D	View Online Template	2.5 lbs.
8'	96"W x 29"H x 29.75"D	View Online Template	3 lbs.

Production Lead Time: 2 days from final proof approval



8' full-color full-bleed

6' full-color front only shown in royal blue



Keep your supplies and accessories out of sight.



### Add-On

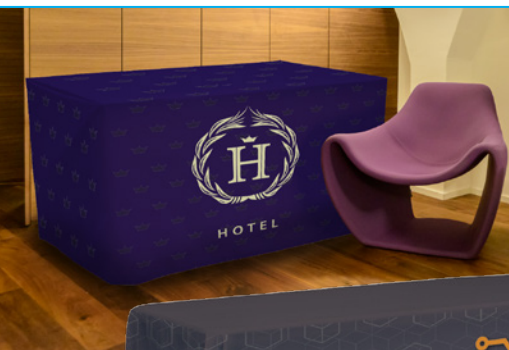
#### Table Throw Messenger Bag

Item #	1	2-5	6-11	12-24
220107	42.29	41.44	40.18	39.33

USD MSRP (C)

Hardware Lead Time: Ships same day when ordered before 2 p.m. Central

# TABLE COVERS



8' full-color full-bleed transforms into a 6' fitted

## CONVERTIBLE TABLE THROW

This throw is easily convertible so it fits both 8' and 6' table sizes.

- Offers a large maximum imprint area for more graphic coverage on full-color front only throws
- Hook-and-loop fasteners make size conversion quick and easy; available in black or white
- Covers four sides of the table
- Polyester poplin
- Machine-washable and wrinkle-resistant
- Flame retardant certified for exhibit hall use



### Full-Color Front Only

Item #	Description	1	2-5	6-11	12-24
104014	6'x8' Convertible Throw	320.75	279.00	263.00	240.50
Stock fabric colors with full-color artwork printed on front. Artwork cannot exceed maximum size requirements.				USD MSRP (C)	

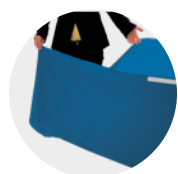
### Full-Color Full-Bleed

Item #	Description	1	2-5	6-11	12-24
104022	6'x8' Convertible Throw	320.75	279.00	263.00	240.50
White fabric fully dye sublimated with full-color artwork.				USD MSRP (C)	

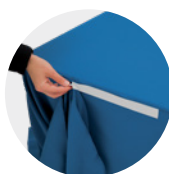
Table Size	Front Only Graphic Size	Full-Bleed Graphic Size	Product Wt.
72"/96"W x 29"H x 29.75"D	64"W x 25"H	View Online Template	3 lbs.

Production Lead Time: 2 days from final proof approval

## Converts from 8' to 6' and Back Again!



1. Grab the back corner of the table throw.



2. Attach the corner to the back of the throw using the built-in hook-and-loop fasteners.



3. Grab the front corner of the throw and fold it tightly around the back corner of the table.



4. Secure it in place with the built-in hook-and-loop fasteners.



57" full-color front only shown in mango



28" with full-color full-bleed

## STANDARD TABLE RUNNER

This stylish runner lets you add a logo or design to any table.

- Offers a large maximum imprint area for more graphic coverage for even more ad space on full-color front only runners
- Available in two widths
- Polyester poplin
- Machine-washable and wrinkle-resistant
- Flame retardant certified for exhibit hall use
- Table throw sold separately



### Full-Color Front Only

Item #	Description	1	2-5	6-11	12-24
102002	28" Standard Runner	164.80	150.00	138.40	125.20
102014	57" Standard Runner	203.80	185.50	171.20	154.90
Stock fabric colors with full-color artwork printed on front. Artwork cannot exceed maximum size requirements.				USD MSRP (C)	

### Full-Color Full-Bleed

Item #	Description	1	2-5	6-11	12-24
102010	28" Standard Runner	164.80	150.00	138.40	125.20
102022	57" Standard Runner	203.80	185.50	171.20	154.90
White fabric fully dye sublimated with full-color artwork.				USD MSRP (C)	

Description	Finished Size	Front Only Graphic Size	Full-Bleed Graphic Size	Product Wt.
28"	28"W x 80"D	24"W x 25"H	View Online Template	0.5 lb.
57"	57"W x 80"D	50"W x 25"H	View Online Template	1 lb.

Production Lead Time: 2 days from final proof approval



Prices are subject to change; visit [showdowndisplays.com](http://showdowndisplays.com) for the most current pricing.  
Setup fee: \$20.00(G); no setup fee on orders placed via our website. View current graphic templates, assembly videos and instructions on our website.

[showdowndisplays.com](http://showdowndisplays.com)



## BEST

## PREMIUM TABLE THROW

Premium throws are perfect for showcasing eye-catching, full-color imagery with an upscale look.

- Covers four sides of the table
- Draped corners
- Nearly opaque material
- Artwork is dye sublimated on two-way stretch fabric
- Machine-washable
- Flame retardant certified for exhibit hall use



## Full-Color Full-Bleed

Item #	Description	1	2-5	6-11	12-24
109070	6' Premium Throw	566.50	515.50	493.00	464.50
109071	8' Premium Throw	598.00	544.00	520.50	490.50
White fabric fully dye sublimated with full-color artwork.		USD MSRP (C)			

Description	Table Size	Full-Bleed Graphic Size	Product Wt.
6'	72"W x 29"H x 29.75"D	View Online Template	3.5 lbs.
8'	96"W x 29"H x 29.75"D	View Online Template	4.75 lbs.

Production Lead Time: 2 days from final proof approval



Finished with a hemmed edge.



## ULTRAFIT TABLE THROW

This form-fitting throw is an attractive option for promoting your brand. It stretches to fit tightly around tables, creating a crisp, refined appearance.

- Tight, form-fitting look
- Artwork is dye sublimated on two-way stretch fabric
- Machine-washable and wrinkle-resistant
- Flame retardant certified for exhibit hall use

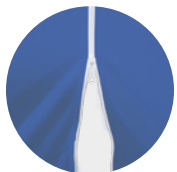


## UltraFit Table Throw

Item #	Description	1	2-5	6-11	12-24
114012	31.5" Bar-Height Full-Color Full-Bleed	388.75	353.75	338.25	318.75
114100	4' Demo Full-Color Full-Bleed	403.75	367.50	351.25	331.00
114002	6' Classic Full-Color Full-Bleed	475.00	432.25	413.25	389.50
114005	8' Classic Full-Color Full-Bleed	527.50	480.00	459.00	432.50
White fabric fully dye sublimated with full-color artwork.		USD MSRP (C)			

Description	Table Size	Full-Bleed Graphic Size	Product Wt.
31.5" Bar-Height	43"H x 31.5"D	View Online Template	1.75 lbs.
4' Demo	47.75"W x 36"H x 24"D	View Online Template	2 lbs.
6' Classic	72"W x 29"H x 29.75"D	View Online Template	2.5 lbs.
8' Classic	96"W x 29"H x 29.75"D	View Online Template	3 lbs.

Production Lead Time: 4 days from final proof approval



Demo and Classic feature a zippered back for an enclosed storage area.



Table leg slips into the sleeve to pull the throw taut.

31.5" Bar-height

Prices are subject to change; visit [showdowndisplays.com](http://showdowndisplays.com) for the most current pricing.

Setup fee: \$20.00(G); no setup fee on orders placed via our website. View current graphic templates, assembly videos and instructions on our website.

[showdowndisplays.com](http://showdowndisplays.com)

# RETRACTABLE BANNERS

## When choosing a retractable banner have you considered...

- Will your graphic be permanent, or will you be swapping it out frequently?
- How often will your retractor be set up and taken down?
- Do you want a single- or double-sided display?

### GOOD IDEAL RETRACTOR

The Ideal Retractor is designed from the ground up to be a quick, simple solution for short-term promotional applications.

- Lightweight, portable base
- Three-section shock cord pole
- Artwork is printed on tear-resistant Titan™ polypropylene media



#### Ideal Retractor

Item #	Description	1	2-5	6-11	12-24
261150	31.5" Kit	134.90	126.90	121.40	113.30
261153	33.5" Kit	148.00	139.10	133.20	124.30

Kit Includes: Hardware, Installed Graphic and Soft Carry Case USD MSRP (C)

Description	Product Size	Finished Graphic Size	Product Wt.	Media
31.5"	32.25"W x 82.25"H x 10.25"D	31.25"W x 79.5"H	4.6 lbs.	Titan™ Polypropylene Media
33.5"	34.25"W x 82.25"H x 10.25"D	33.25"W x 79.5"H	5 lbs.	Titan™ Polypropylene Media

Production Lead Time: 1 day from final proof approval



Plastic swivel foot for stability.



Banner rail easily attaches to the top of the pole for quick setup.



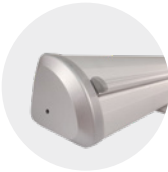
Shock cord pole makes setup and teardown easy.



Lightweight aluminum base features plastic ends.



Shock cord pole makes setup and teardown easy.



Lightweight aluminum base with plastic ends.

### VALUE RETRACTOR

The Value Retractor is a cost-conscious option for your portable signage needs.

- Artwork is printed on tear-resistant Titan™ polypropylene media
- Two swivel feet for stability
- Available in three widths



#### Value Retractor

Item #	Description	1	2-5	6-11	12-24
262240	31.5" Kit	180.70	169.90	162.70	151.80
262243	33.5" Kit	189.60	178.20	170.60	159.30
262246	36" Kit	192.20	180.70	173.00	161.50

Kit Includes: Hardware, Installed Graphic and Soft Carry Case USD MSRP (C)

Description	Product Size	Finished Graphic Size	Product Wt.	Media
31.5"	34"W x 82"H x 15"D	31.5"W x 79.5"H	7 lbs.	Polypropylene Media
33.5"	35.75"W x 82"H x 15"D	33.5"W x 79.5"H	7.25 lbs.	Polypropylene Media
36"	38.5"W x 82"H x 15"D	36"W x 79.5"H	7.6 lbs.	Polypropylene Media

Production Lead Time: 2 days from final proof approval



## ECONOMY RETRACTOR

The popular Economy Retractor is versatile and budget-friendly, making it a great option for the cost-conscious marketer.

- Lightweight aluminum base
- Banner available in Titan™ no-curl hybrid media, Titan™ no-curl opaque fabric or PVC-free silver backed media



### Economy Retractor

Item #	Description	1	2-5	6-11	12-24
261134	31.5" No-Curl Hybrid Media Kit	287.00	269.75	258.25	241.25
262162	31.5" No-Curl Opaque Fabric Kit	287.00	269.75	258.25	241.25
261364	31.5" PVC-Free Silver Backed Media Kit	287.00	269.75	258.25	241.25
261136	33.5" No-Curl Hybrid Media Kit	297.50	279.50	267.75	249.75
262163	33.5" No-Curl Opaque Fabric Kit	297.50	279.50	267.75	249.75
261366	33.5" PVC-Free Silver Backed Media Kit	297.50	279.50	267.75	249.75
261138	36" No-Curl Hybrid Media Kit	332.25	312.25	299.00	279.00
262164	36" No-Curl Opaque Fabric Kit	332.25	312.25	299.00	279.00
261368	36" PVC-Free Silver Backed Media Kit	332.25	312.25	299.00	279.00
Kit Includes: Silver or Black Hardware, Installed Graphic and Soft Carry Case		USD MSRP (C)			

Description	Product Size	Finished Graphic Size	Product Wt.
31.5"	32"W x 83.5"H x 15"D	View Product Template	7 lbs.
33.5"	34"W x 83.5"H x 15"D	View Product Template	7.25 lbs.
36"	36.5"W x 83.5"H x 15"D	View Product Template	8.5 lbs.

Production Lead Time: 2 days from final proof approval

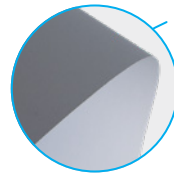


### Add-On

#### Ultimate LED Single Light Kit

Item #	Description	1	2-5	6-11	12-24
150120	Kit	181.20	175.80	170.30	164.90
		USD MSRP (C)			

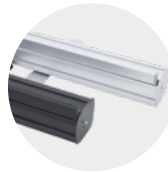
Hardware Lead Time: Ships same day when ordered before 2 p.m. Central



Our sustainable display option uses PVC-free media and includes the recyclable aluminum base.



31.5" with single light kit (sold separately)



Hardware available in silver or black.



Two swivel feet for stability.



Banner rail easily attaches to the top of the pole for quick setup.

## BETTER

## ECONOMY PLUS RETRACTOR

This display elevates our popular Economy Retractor with improved durability and additional features.

- Available in two widths
- Single-footed design keeps the retractor stable while maintaining a low profile
- Flip-lever telescoping pole makes setup and adjustment simple
- Banner available in Titan™ no-curl hybrid media or dry-erase media



### Economy Plus Retractor

Item #	Description	1	2-5	6-11	12-24
261012	31.5" No-Curl Hybrid Media Kit	325.75	306.00	293.00	273.50
262191	31.5" Dry-Erase Media Kit	325.75	306.00	293.00	273.50
261002	33.5" No-Curl Hybrid Media Kit	343.00	322.50	308.50	288.00
262192	33.5" Dry-Erase Media Kit	343.00	322.50	308.50	288.00
Kit Includes: Hardware, Installed Graphic and Soft Carry Case		USD MSRP (C)			

Description	Product Size	Finished Graphic Size	Product Wt.
31.5"	32"W x 64"-82.5"H x 15"D	31.5"W x 60"-78.5"H	7 lbs.
33.5"	34"W x 64"-82.5"H x 15"D	33.5"W x 60"-78.5"H	7.5 lbs.

Production Lead Time: 2 days from final proof approval



Dry-erase media lets you write out your message and wipe it away (markers not included).



Hook-and-loop fasteners make banners easy to swap out.



Prices are subject to change; visit [showdowndisplays.com](http://showdowndisplays.com) for the most current pricing.

Setup fee: \$20.00(G); no setup fee on orders placed via our website. View current graphic templates, assembly videos and instructions on our website.

[showdowndisplays.com](http://showdowndisplays.com)



Dry-erase media lets you write out your message and wipe it away (markers not included).

## DELUXE PRO RETRACTOR

The Deluxe Pro Retractor features a curved base with durable aluminum end caps. Swapping out graphics is a breeze with the hook-and-loop banner system.

- Banner available in Titan™ no-curl opaque fabric or dry-erase media
- Banner is printed single-sided; double-sided option includes two banners



### Deluxe Pro Retractor

Item #	Description	1	2-5	6-11	12-24
262250	33.5" Single No-Curl Opaque Fabric Kit	354.75	333.50	319.25	298.00
262251	33.5" Double No-Curl Opaque Fabric Kit	536.00	522.50	480.50	467.00
262202	33.5" Single Dry-Erase Media Kit	354.75	333.50	319.25	298.00
262203	33.5" Double Dry-Erase Media Kit	536.00	522.50	480.50	467.00
262254	46.5" Single No-Curl Opaque Fabric Kit	475.50	447.00	427.75	399.25
262255	46.5" Double No-Curl Opaque Fabric Kit	702.00	683.00	629.00	610.00
262204	46.5" Single Dry-Erase Media Kit	475.50	447.00	427.75	399.25
262205	46.5" Double Dry-Erase Media Kit	702.00	683.00	629.00	610.00

Kit Includes: Hardware, Installed Graphic(s) and Soft Carry Case

USD MSRP (C)

Description	Product Size (Single / Double)	Finished Graphic Size	Product Wt. (Single / Double)
33.5"	34.75"W x 65.25"-83.25"H x 8.5"D / 9.25"D	33.5"W x 61.5"-79.5"H	12.25 lbs. / 16 lbs.
46.5"	48.5"W x 65.25"-83.25"H x 8.5"D / 9.25"D	46.5"W x 61.5"-79.5"H	16.75 lbs. / 22.5 lbs.

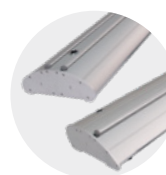
Production Lead Time: 1 day for no-curl opaque fabric / 2 days for dry-erase media from final proof approval



Flip-lever telescoping pole makes setup and adjustment simple.



Hook-and-loop fasteners make banners easy to swap out.



Streamlined base is available in single- and double-banner options.



Our sustainable display option uses PVC-free media and includes the recyclable aluminum base.

## STRATUS RETRACTOR

The Stratus Retractor's streamlined base features a low center of gravity to keep it stable, eliminating the need for fold-out feet.

- Durable, lightweight construction
- Banner available in Titan™ no-curl hybrid media, Titan™ no-curl opaque fabric or PVC-free silver backed media



### Stratus Retractor

Item #	Description	1	2-5	6-11	12-24
262072	31.5" No-Curl Hybrid Media Kit	348.00	327.25	313.25	292.50
262151	31.5" No-Curl Opaque Fabric Kit	348.00	327.25	313.25	292.50
261461	31.5" PVC-Free Silver Backed Media	348.00	327.25	313.25	292.50
262074	33.5" No-Curl Hybrid Media Kit	361.50	339.75	325.25	303.50
262152	33.5" No-Curl Opaque Fabric Kit	361.50	339.75	325.25	303.50
261462	33.5" PVC-Free Silver Backed Media	361.50	339.75	325.25	303.50
262076	36" No-Curl Hybrid Media Kit	384.50	361.50	346.00	323.00
262153	36" No-Curl Opaque Fabric Kit	384.50	361.50	346.00	323.00
261463	36" PVC-Free Silver Backed Media	384.50	361.50	346.00	323.00

Kit Includes: Hardware, Installed Graphic and Soft Carry Case

USD MSRP (C)

Description	Product Size	Finished Graphic Size	Product Wt.
31.5"	33"W x 67.5"-81.625"H x 7.125"D	View Product Template	11.25 lbs.
33.5"	34.25"W x 67.5"-81.625"H x 7.125"D	View Product Template	12 lbs.
36"	37.25"W x 67.5"-81.625"H x 7.125"D	View Product Template	12.5 lbs.

Production Lead Time: 2 days from final proof approval



Hook-and-loop fasteners make banner easy to swap out.



Aluminum base features chrome end caps and has a low center of gravity.



Shock cord pole with telescoping flip-lever extension makes setup and adjustment simple.



## BEST

## SPOTLIGHT RETRACTOR

**Illuminate the possibilities at your next event with this lit retractor.**

- Has the look of a light box with the portability, convenience and easy setup of a retractable banner
- Artwork is printed on flexible backlit film
- Light is radiated from the base by LED lights
- Kit includes two single-sided banners
- Plugs into any standard USA outlet
- Illuminate up to three units via a single power source with the included connector cords
- On/off switch for the lights is located on the side of the base
- UL/CE certified
- US Patent #201920486314.5



## Spotlight Retractor

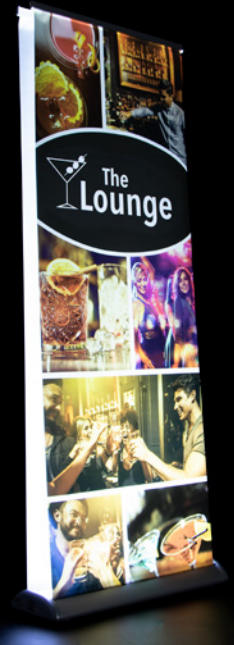
Item #	Description	1	2-5	6-11	12-24
261304	Kit	706.50	664.50	635.50	593.50
Kit Includes: Hardware, 2 Installed Graphics and Soft Carry Case		USD MSRP (C)			

Product Size	Finished Graphic Size	Product Wt.	Media
34"W x 84"H x 10.25"D	31.25"W x 78.5"H	22 lbs.	Flexible Backlit Film

Production Lead Time: 2 days from final proof approval



LIGHTS UP!



Connector cord can be used to link retractors together.



LED lights integrated into the base provide illumination.



Hardware holds two banners for a double-sided display.



Shock cord pole makes setup and teardown easy.

## SPECIALTY

## JUMBO WIDE RETRACTOR

**Create an impressive backdrop with this ultra-wide retractable banner.**

- High-tension base springs keep the banner taut
- Double-footed design for stability
- Banner available in Titan™ no-curl fabric or Titan™ 13 oz. smooth scrim vinyl
- Available in three widths

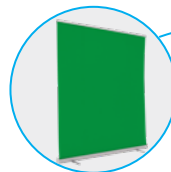


## Jumbo Wide Retractor

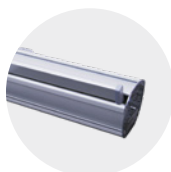
Item #	Description	1	2-5	6-11	12-24
262138	5' No-Curl Fabric Kit	705.50	663.00	635.00	592.50
261080	5' 13 oz. Smooth Scrim Vinyl Kit	705.50	663.00	635.00	592.50
262139	6' No-Curl Fabric Kit	852.50	801.50	767.50	716.00
261082	6' 13 oz. Smooth Scrim Vinyl Kit	852.50	801.50	767.50	716.00
262140	8' No-Curl Fabric Kit	996.50	936.50	897.00	837.00
261018	8' 13 oz. Smooth Scrim Vinyl Kit	996.50	936.50	897.00	837.00
Kit Includes: Hardware, Installed Graphic and Soft Carry Case		USD MSRP (C)			

Description	Product Size	Finished Graphic Size	Product Wt. (Fabric / Vinyl)
5'	60.5"W x 83"H x 15.75"D	59.75"W x 78.75"H	18.85 lbs. / 20.75 lbs.
6'	72.5"W x 83"H x 15.75"D	71.75"W x 78.75"H	21.35 lbs. / 23.5 lbs.
8'	95.5"W x 83"H x 15.75"D	94.75"W x 78.75"H	26.35 lbs. / 29.5 lbs.

Production Lead Time: 2 days for 13 oz. smooth scrim vinyl / 4 days for no-curl fabric from final proof approval



Get a green screen compatible backdrop printed as PMS 354C; available online.



Hardware comes in silver.



Two shock cord poles support the banner.



Sustainable recycled polyester knit is made with REPREE® fibers recycled from plastic bottles.

## EUROFIT BANNER DISPLAY

A fabric graphic cover slides over a tubed frame, letting you create amazing backdrops or portable privacy walls.

- Multiple sizes can be arranged together for endless display possibilities
- Artwork is dye sublimated on recycled polyester knit
- 100% recycled media is made with REPREE® fibers
- Double-sided graphic cover is viewable from both the front and back of the display
- Steel base with a black, powder-coated finish
- Not compatible with the EuroFit Connector or EuroFit Cascade Merchandiser kits



### EuroFit Banner Display with Recycled Polyester Knit

Item #	Description	1	2-5	6-11	12-24
255110	2' Kit	283.00	274.00	266.00	257.00
255113	3' Kit	389.00	378.00	366.00	354.00

Kit Includes: Hardware, Graphic Cover and Soft Carry Case

USD MSRP (C)

Description	Product Size	Finished Graphic Size	Product Wt.
2'	25.75"W x 91"H x 10"D	View Online Template	15.5 lbs.
3'	37.75"W x 91"H x 10"D	View Online Template	20.5 lbs.

Production Lead Time: 4 days from final proof approval

## Add-Ons

### Ultimate LED Light Kit and EuroFit Light Clamp

Add an Ultimate LED Light Kit to your display using the EuroFit Light Clamp (sold separately). For use on horizontal tubing only.

Item #	Description	1	2-5	6-11	12-24
150120	Ultimate LED Single Light Kit	181.20	175.80	170.30	164.90
255125	EuroFit Light Clamp	6.80	6.60	6.40	6.20



Hardware Lead Time: Ships same day when ordered before 2 p.m. Central



Biodegradable media kits are available online.



## FRAMEWORX BANNER DISPLAY

These lightweight displays feature a contemporary design that brings new life to your exhibit.

- Banners attach using low-profile clear grommets
- Face cutout hole location is standard and cannot be customized



### FrameWorx Banner Display

Item #	Description	1	2-5	6-11	12-24
263061	3' 13 oz. Smooth Scrim Vinyl Single-Sided Kit	179.20	172.00	166.70	157.70
263062	3' 13 oz. Smooth Scrim Vinyl Double-Sided Kit	214.40	205.80	199.40	188.70
263328	8.5' 600 Denier Polyester Kit	471.75	453.00	438.75	415.25
263331	10.5' 600 Denier Polyester Kit	516.00	495.50	480.00	454.00

3' Kit Includes: Silver or Black Hardware, Graphic and Soft Carry Case  
8.5' & 10.5' Kit Includes: Black Hardware, Graphic and Soft Carry Case

USD MSRP (C)

Description	Product Size	Finished Graphic Size	Product Wt.
3'	36.75"W x 74"H x 15.5"D	View Online Template	5.6 lbs.
8.5'	101.75"W x 90.5"H x 15.5"D	View Online Template	15 lbs.
10.5'	123.25"W x 90.25"H x 15.5"D	View Online Template	17 lbs.

### 3.5' FrameWorx Face Cutout

Item #	Description	1	2-5	6-11	12-24
263054	13 oz. Smooth Scrim Vinyl Single Face Cutout Kit	200.30	192.30	186.30	176.30

Kit Includes: Silver or Black Hardware, Graphic and Soft Carry Case

USD MSRP (C)

Product Size	Finished Graphic Size	Product Wt.
41"W x 81.75"H x 15.5"D	View Online Template	6.2 lbs.

Production Lead Time: 2 days for 13 oz. smooth scrim vinyl / 4 days for 600 denier polyester from final proof approval

Prices are subject to change; visit [showdowndisplays.com](http://showdowndisplays.com) for the most current pricing.

Setup fee: \$20.00(G); no setup fee on orders placed via our website. View current graphic templates, assembly videos and instructions on our website.

[showdowndisplays.com](http://showdowndisplays.com)



## EVERYDAY BANNER DISPLAY

These displays feature a durable steel frame with a long-lasting, powder-coated finish.

- The Everyday Banner Display features pole pockets and dowels to hold the banner in place
- The Everyday Heavy-Duty Banner Display has all the same features as the Everyday Banner Display, but reinforced with a stronger, thicker frame and wider base
- The Everyday Snap Rail Banner Display replaces the dowel and pole pockets with snap rails for a clean finish
- Hex wrench included



### Everyday Banner Display (Single-Sided)

Item #	Description	1	2-5	6-11	12-24
210265	Everyday Kit	232.90	223.60	216.60	205.00
210226	Everyday Heavy-Duty Kit	275.50	264.50	256.25	242.50

Kit Includes: Hardware, Graphic and (2) 24" Dowels USD MSRP (C)

Description	Product Size	Finished Graphic Size	Product Wt.	Media
Everyday	24"W x 48"-92"H x 13"D	12"-36"W x 12"-91"H	11 lbs.	Titan™ 11 mil Polyester
Heavy-Duty	24"W x 55"-105"H x 14"D	12"-36"W x 12"-104"H	13.5 lbs.	Titan™ 11 mil Polyester

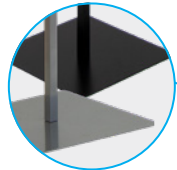
### Everyday Snap Rail Banner Display (Single-Sided)

Item #	Description	1	2-5	6-11	12-24
264030	24" Kit	258.00	247.75	240.00	227.00
264032	30" Kit	270.75	260.00	251.75	238.25

24" Kit Includes: Hardware and Graphic  
30" Kit Includes: Hardware and Graphic

Description	Product Size	Finished Graphic Size	Product Wt.	Media
24"	24"W x 48"-92"H x 13.25"D	24"W x 12"-92"H	13 lbs.	Titan™ 11 mil Polyester
30"	30"W x 48"-92"H x 13.25"D	30"W x 12"-92"H	14 lbs.	Titan™ 11 mil Polyester

Production Lead Time: 2 days from final proof approval



Everyday hardware available in silver or black. Heavy-Duty and Snap Rail hardware available in black.



Everyday banner display with silver hardware



Everyday Heavy-Duty banner display



Everyday Snap Rail banner display

## HEADLINER BANNER DISPLAY

This enormous banner display is great for use in parking lots or at outdoor events.

- Banner available in backlit woven polyester or Titan™ 18 oz. opaque scrim vinyl
- Vinyl banners can be printed single- or double-sided; polyester banner available single-sided only
- Includes four heavy-duty black stakes
- Adjustable frame hardware is compatible with custom banner heights and widths (call for quote; restrictions may apply)
- Banners used outdoors have a 90-day warranty; banners used indoors have a 1-year warranty



### Headliner Banner Display

Item #	Description	1	2-5	6-11	12-24
263400	Backlit Woven Polyester Single-Sided Kit	1574.00	1511.00	1464.00	1385.00
263401	18 oz. Opaque Scrim Vinyl Single-Sided Kit	1574.00	1511.00	1464.00	1385.00
263402	18 oz. Opaque Scrim Vinyl Double-Sided Kit	1699.00	1631.00	1580.00	1495.00

Kit Includes: Hardware, Graphic, 4 Stakes and Soft Carry Case with Wheels USD MSRP (C)

Product Size	Finished Graphic Size	Product Wt. (Polyester / Vinyl)
129.75"W x 85.25"H x 39.5"D	119"W x 76.5"H	56 lbs. / 60 lbs.

Production Lead Time: 2 days for 18 oz. scrim vinyl / 4 days for backlit woven polyester from final proof approval



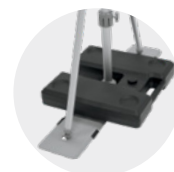
Heavy-duty steel foot features a handle so it's easy to position during setup.



Thumbscrews on the frame make it easy to set up and adjust.



Banner rail slides into notches in the frame's hubs.



Ballasts (sold separately; see website) keep the feet weighted down.

## When choosing a banner have you considered...

- Will you be using your banner indoors or outdoors?
- How long will your banner be displayed?
- Do you need a single- or double-sided banner?



3' x 6' banner with grommets



4' x 8' banner with grommets



2' x 4' banner with pole pockets

## POPULAR BANNER FINISHING STYLES

Additional finishing styles available online.

### Heat Weld

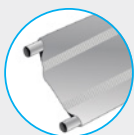
Single-sided vinyl banners only



HEM & GROMMETS



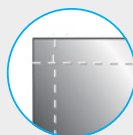
HEM, ROPE & GROMMETS



3" POLE POCKETS

### Sewn

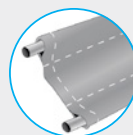
Fabric and double-sided vinyl banners



HEM ONLY



HEM & GROMMETS



3" POLE POCKETS

## GOOD

### 9 OZ. MESH VINYL BANNER

This single-sided banner is made of breathable 60/40 mesh vinyl that excels on breezy days.

- Multiple finishing styles available



#### 9 oz. Mesh Vinyl Banner

Item #	Description	Product Wt.	1	2-4	5-14	15-33
304411	2' x 6'	1.25 lbs.	60.70	55.70	51.10	47.30
Item #	Description	Product Wt.	1	2-3	4-9	10-22
304414	3' x 6'	2 lbs.	91.10	83.60	76.70	71.00
Item #	Description	Product Wt.	1	2-5	6-12	13-24
304417	4' x 8'	3 lbs.	149.10	136.40	126.20	113.90

USD MSRP (C)

Production Lead Time: 2 days from final proof approval

## BETTER

### 13 OZ. SCRIM VINYL BANNER

Versatile enough for both indoor and outdoor use, this single-sided banner is a top choice.

- Multiple finishing styles available



#### 13 oz. Scrim Vinyl Banner

Item #	Description	Product Wt.	1-2	3-7	8-22	23-49
304360	2' x 4'	1 lb.	35.52	31.97	28.77	26.28
Item #	Description	Product Wt.	1	2-3	4-9	10-22
304364	3' x 6'	2.5 lbs.	79.90	71.90	64.70	59.15
Item #	Description	Product Wt.	1	2-5	6-12	13-24
304367	4' x 8'	4 lbs.	129.90	116.90	105.20	96.10

USD MSRP (C)

Production Lead Time: 2 days from final proof approval

## BEST

### 18 OZ. OPAQUE SCRIM VINYL BANNER

This banner is reinforced with scrim, making it extremely durable for outdoor use.

- Multiple finishing styles available



#### 18 oz. Opaque Scrim Vinyl Banner (Single-Sided)

Item #	Description	Product Wt.	1	2-3	4-9	10-22
304384	3' x 6'	2.5 lbs.	91.10	83.60	76.70	71.00
Item #	Description	Product Wt.	1	2-5	6-12	13-24
304387	4' x 8'	4 lbs.	148.80	136.70	126.60	113.70
Item #	Description	Product Wt.	1	2-4	5-9	10-19
304388	4' x 10'	5 lbs.	186.00	170.80	158.20	142.10

USD MSRP (C)

#### 18 oz. Opaque Scrim Vinyl Banner (Double-Sided)

Item #	Description	Product Wt.	1-2	3-7	8-22	23-49
304470	2' x 4'	1 lb.	85.75	80.60	74.95	70.40
Item #	Description	Product Wt.	1	2-3	4-9	10-22
304472	3' x 6'	2.5 lbs.	193.00	181.40	168.70	158.50
Item #	Description	Product Wt.	1	2-5	6-12	13-24
304474	4' x 8'	4 lbs.	322.00	299.50	281.50	260.25

USD MSRP (C)

Production Lead Time: 2 days from final proof approval

Prices are subject to change; visit [showdowndisplays.com](http://showdowndisplays.com) for the most current pricing.

Setup fee: \$20.00(G); no setup fee on orders placed via our website. View [current graphic templates](#), [assembly videos](#) and [instructions](#) on our website.

[showdowndisplays.com](http://showdowndisplays.com)



## SAIL SIGNS

Sail signs are built to move in the wind, making them truly hard to miss.

- Warranty information available online



GOOD

### Value Teardrop Sail Sign

Description	Item #	1	2-5	6-11	12-24	Item #	1	2-5	6-11	12-24
6.5' Kit with Cross Base and Water Ballast	191611	190.10	184.40	174.90	169.20	191613	286.50	277.75	263.50	255.00
9.5' Kit with Cross Base and Water Ballast	191619	216.30	209.80	198.90	192.50	191621	328.75	319.00	302.50	292.75
13' Kit with Cross Base and Water Ballast	191627	285.00	276.50	262.25	253.75	191629	429.75	416.75	395.25	382.50
Kit Includes: Hardware with Specified Base and Graphic (Does not include carry case)										USD MSRP (C)

### Value Razor Sail Sign

Description	Item #	1	2-5	6-11	12-24	Item #	1	2-5	6-11	12-24
7.5' Kit with Cross Base and Water Ballast	191651	190.10	184.40	174.90	169.20	191653	286.50	277.75	263.50	255.00
10.5' Kit with Cross Base and Water Ballast	191659	216.30	209.80	198.90	192.50	191661	328.75	319.00	302.50	292.75
15' Kit with Cross Base and Water Ballast	191667	285.00	276.50	262.25	253.75	191669	429.75	416.75	395.25	382.50
Kit Includes: Hardware with Specified Base and Graphic (Does not include carry case)										USD MSRP (C)

BETTER

### Streamline Teardrop Sail Sign

Description	Item #	1	2-5	6-11	12-24	Item #	1	2-5	6-11	12-24
6' Kit with Three-Legged Base and Water Ballast	191401	267.00	259.00	245.50	237.75	191409	368.75	357.75	339.25	328.25
8' Kit with Scissor Base and Water Ballast	191403	337.75	327.50	310.75	300.75	191411	455.25	441.50	419.00	405.25
11.5' Kit with Scissor Base and Water Ballast	191405	398.00	386.00	366.00	354.25	191413	565.50	548.50	520.00	503.50
15' Kit with Scissor Base and Water Ballast	191407	470.25	456.00	432.75	418.50	191415	682.00	661.50	627.50	607.00
Kit Includes: Hardware with Specified Base, Graphic and Soft Carry Case										USD MSRP (C)

### Streamline Razor Sail Sign

Description	Item #	1	2-5	6-11	12-24	Item #	1	2-5	6-11	12-24
7' Kit with Three-Legged Base and Water Ballast	191429	267.00	259.00	245.50	237.75	191437	368.75	357.75	339.25	328.25
9' Kit with Scissor Base and Water Ballast	191431	337.75	327.50	310.75	300.75	191439	455.25	441.50	419.00	405.25
13' Kit with Scissor Base and Water Ballast	191433	398.00	386.00	366.00	354.25	191441	565.50	548.50	520.00	503.50
17' Kit with Scissor Base and Water Ballast	191435	470.25	456.00	432.75	418.50	191443	682.00	661.50	627.50	607.00
Kit Includes: Hardware with Specified Base, Graphic and Soft Carry Case										USD MSRP (C)

BEST

### Premium Teardrop Sail Sign

Description	Item #	1	2-5	6-11	12-24	Item #	1	2-5	6-11	12-24
6' Kit with Three-Legged Base and Water Ballast	190979	299.25	290.25	275.25	266.25	190978	434.25	421.25	399.50	386.50
8' Kit with Scissor Base and Water Ballast	190763	369.75	358.75	340.25	329.25	190762	519.50	504.00	478.00	462.50
11.5' Kit with Scissor Base and Water Ballast	190765	432.00	419.00	397.25	384.50	190764	633.50	614.50	582.50	564.00
15' Kit with Scissor Base and Water Ballast	190767	500.50	485.50	460.50	445.50	190766	746.00	723.50	686.50	664.00
Kit Includes: Hardware with Specified Base, Graphic and Soft Carry Case										USD MSRP (C)

### Premium Razor Sail Sign

Description	Item #	1	2-5	6-11	12-24	Item #	1	2-5	6-11	12-24
7' Kit with Three-Legged Base and Water Ballast	190985	299.25	290.25	275.25	266.25	190984	434.25	421.25	399.50	386.50
9' Kit with Scissor Base and Water Ballast	190757	369.75	358.75	340.25	329.25	190756	519.50	504.00	478.00	462.50
13' Kit with Scissor Base and Water Ballast	190759	432.00	419.00	397.25	384.50	190758	633.50	614.50	582.50	564.00
17' Kit with Scissor Base and Water Ballast	190761	500.50	485.50	460.50	445.50	190760	746.00	723.50	686.50	664.00
Kit Includes: Hardware with Specified Base, Graphic and Soft Carry Case										USD MSRP (C)

Product Size      Finished Graphic Size  
Sizes Vary      View Online Template

Production Lead Time: 4 days for Value and Premium / 2 days for Streamline from final proof approval

### Sail Sign Accessories

Item #	Description	Product Wt.	1	2-5	6-11	12-24
190714	3-Legged Base	1.25 lbs.	40.39	39.18	37.16	35.95
190706	Ground Spike	2 lbs.	54.25	52.60	49.90	48.30
190711	Heavy-Duty Cross Base	9 lbs.	95.65	92.80	88.00	85.15
190708	Round Water Ballast	0.5 lb.	54.75	53.10	50.35	48.75
190707	Scissor Base	7 lbs.	82.70	80.20	76.10	73.60
190710	Square Water Ballast	0.5 lb.	54.75	53.10	50.35	48.75
220082	Universal Product Case	7 lbs.	156.10	153.00	148.30	145.20
191591	Value Cross Base	2.8 lbs.	39.77	38.58	36.59	35.40
191590	Value Spike	2 lbs.	39.77	38.58	36.59	35.40
USD MSRP (C)						

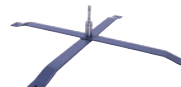
Hardware Lead Time: Ships same day when ordered before 2 p.m. Central



Three-legged base for 6' & 7' sail signs (indoor)



Ground spike (outdoor)



Heavy-duty cross base (indoor/outdoor)



Round water ballast for 6'-13' sail signs (indoor/outdoor)



Scissor base (indoor/outdoor)



Square water ballast for 14.5'-17' sail signs (indoor/outdoor)



Universal product case (holds up to three sail sign kits)



Value cross base (indoor/outdoor)



Value spike (outdoor)

## When choosing a sail sign have you considered...

- How long will your sail sign be displayed?
- Do you need a single- or double-sided display?
- Will you be using this product indoors or outdoors?





## NYLON FLAG

Lightweight and fade-resistant, our nylon flags come in a variety of shapes and sizes and are perfect for indoor and outdoor use.

- Constructed of 200 denier nylon
- Standard finishing includes canvas header and brass grommets
- Four rows of lock-stitching provide extra reinforcement on the fly end of rectangular flags
- Single- and double-sided options available
- Custom sizes and finishing available (visit website or call for quote; restrictions may apply)
- Flags used outdoors have a 90-day warranty; flags used indoors have a 1-year warranty



### Rectangle Nylon Flag

Item #	Size	Product Wt.	1	2-5	6-11	12-24
304535	3' X 5' Single-Sided Flag	0.5 lb.	100.70	80.60	75.50	65.50
304555	3' X 5' Double-Sided Flag	1.5 lbs.	201.30	161.00	151.00	130.80
304536	4' X 6' Single-Sided Flag	0.7 lb.	138.40	110.70	103.80	90.00
304556	4' X 6' Double-Sided Flag	2.1 lbs.	277.00	221.50	207.75	180.00
304537	5' X 8' Single-Sided Flag	1 lb.	201.30	161.00	151.00	130.80
304557	5' X 8' Double-Sided Flag	3 lbs.	402.75	322.25	302.00	261.75

USD MSRP (C)

Production Lead Time: 4 days from final proof approval

### Single-Sided



Single-sided flags are printed on one side; reverse image shows through the back.

### Double-Sided



Double-sided flags have the image printed correctly on both sides with a block-out polyester liner.



Double-sided flags feature a lightweight block-out polyester for increased flyability.

## FABRIC FLAG

Easy to hang, this flag works with any standard flagpole.

- Best for outdoor use
- Single- and double-sided options available
- Artwork is dye sublimated on super poly knit fabric for single-sided flags and on block-out polyester for double-sided flags
- Custom sizes and finishing available (visit website or call for quote; restrictions may apply)
- Flags used outdoors have a 90-day warranty; flags used indoors have a 1-year warranty



### Fabric Flag

Item #	Description	Product Wt.	1	2-5	6-11	12-24
300007	3' x 5' Single-Sided Flag	0.5 lb.	100.70	80.60	75.50	65.50
300019	3' x 5' Double-Sided Flag	1 lb.	201.30	161.00	151.00	130.80
300011	4' x 6' Single-Sided Flag	1 lb.	138.40	110.70	103.80	90.00
300020	4' x 6' Double-Sided Flag	2 lbs.	277.00	221.50	207.75	180.00
300015	5' x 8' Single-Sided Flag	1.25 lbs.	186.30	149.00	139.70	121.10
300021	5' x 8' Double-Sided Flag	2.5 lbs.	372.50	298.00	279.50	242.25

USD MSRP (C)

Production Lead Time: 4 days from final proof approval

### Single-Sided



Single-sided flags are printed on one side; reverse image shows through the back.

### Double-Sided



Double-sided flags have the image printed correctly on both sides with a block-out polyester.

Prices are subject to change; visit [showdowndisplays.com](http://showdowndisplays.com) for the most current pricing.  
Setup fee: \$20.00(G); no setup fee on orders placed via our website. View current graphic templates, assembly videos and instructions on our website.

[showdowndisplays.com](http://showdowndisplays.com)



## SPIN 'N WIN PRIZE WHEEL

Give your next trade show or event a creative spin.

- Powder-coated steel legs
- A plastic clicker makes a ticking sound as the wheel spins
- Central disc panel attaches magnetically and remains stationary when the wheel spins
- All graphic panels can be custom printed with your design
- Includes twelve prize panels and central disc panel



### Spin 'N Win Prize Wheel

Item #	Description	1	2-5	6-11	12-24
280104	Kit	711.50	697.50	690.00	676.00
Kit Includes: Hardware, Graphic Panels and Soft Carry Case		USD MSRP (C)			

Product Size	Finished Graphic Size	Product Wt.	Graphic Media
31.25"W x 40.75"-72"H x 16"-31"D	<a href="#">View Online Template</a>	16.5 lbs.	Titan™ No-Curl Laminated Media

Production Lead Time: 2 days from final proof approval



### Need a Tabletop Game?

Simply remove the leg extensions to transform this prize wheel into a game suitable for tabletop use.



Loud clicker attracts attention at noisy events.



Graphic panels and central disc panel can be printed using a desktop printer.



## BAG TOSS GAME

Toss in some friendly competition at your next outdoor event with this customizable game.

- Two game boards clasp together into a single unit that can be easily transported using the convenient carry handle
- Durable plastic construction prevents rust and splinters
- Included rope acts as a distance regulator
- Hinged legs fold out to prop the game boards up at an angle
- 90-day warranty on graphic panels



### Bag Toss Game

Item #	Description	1	2-5	6-11	12-24
280310	Kit	299.75	293.75	290.75	284.75
Kit Includes: Hardware, 8 Unimprinted Bean Bags and 2 Graphic Panels		USD MSRP (C)			

Product Size	Finished Graphic Size	Product Wt.	Media
Folded: 21.5"W x 2.75"H x 33.125"D (1) Open: 21.5"W x 10.5"H x 32.75"D	<a href="#">View Online Template</a>	21.5 lbs.	Titan™ No-Curl Laminated Media

Production Lead Time: 3 days from final proof approval



Built-in score keepers slide up and down the edges of the board.



Bean bags can be stored inside plastic molded pockets so they don't get left behind.

### Add-Ons

Attach the Bag Toss Buddy to your Bag Toss (sold separately) for access to a bag holder, score keeper and drink holder.

Personalize your bags with custom printed bean bags.

See website for details.



Item #280315  
Custom Printed Bean Bags



Item #280314  
Bag Toss Buddy

## When choosing a tent have you considered...

- How frequently will you be using your tent?
- What is the desired impact of your promotional message?
- Would you like to add accessories for additional branding options?



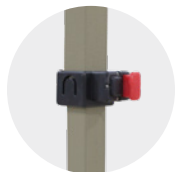
10' tent with full-bleed dye sublimation shown with dye sublimated double-sided full wall (wall sold separately)

### GOOD

#### 10' STANDARD TENT

This popular tent strikes a perfect balance between cost effectiveness and portability.

- 1.125"W square legs constructed of 1 mm pebble powder-coated steel
- ABS nylon joints
- Crank-up canopy creates a taut, clean peak
- 10' canopy available in eight stock colors (see below), with full-bleed dye sublimation or with full-bleed UV printing (available online)



Legs feature plastic push buttons for pinch-free height adjustments.



Easy-Glide Tent Feet allow the tent frame to slide on dirt and grass, preventing the legs from catching. US Patent #D760857

#### 10' Standard Tent

Item #	Description	1	2-5	6-11	12-24
240611	Full-Color Imprint Kit (1 Location)	634.00	621.50	608.50	589.50
240612	Full-Color Imprint Kit (2 Locations)	716.00	701.50	687.50	666.00
240614	Full-Color Imprint Kit (4 Locations)	857.50	840.50	823.00	797.50
240619	Dye Sublimation Kit	1272.00	1247.00	1221.00	1183.00
Kit Includes: Tent Frame, Canopy, Stake Kit and Soft Carry Case with Wheels				USD MSRP (C)	

Product Size	Imprint Graphic Size	Dye Sub Graphic Size	Product Wt.
118.5"W x 127.5"H x 140"D	Peak: 44"W x 24"H; Valance: 60"W x 8"H	View Online Template	51.5 lbs.

Production Lead Time: 4 days for full-color imprint / 7 days for dye sublimation from final proof approval

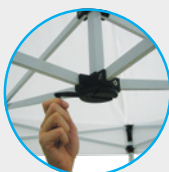
### Tent Features & Benefits



Sets up in minutes.



Adjust tent height with the push of a button.



Crank-up canopy creates a taut, clean peak.



Secure tent to the ground with stake kit.



Collapses easily to store in soft case with wheels.

### 10' Tent Stock Canopy Colors





## BETTER

## 8' &amp; 10' DELUXE TENTS

Designed for frequent use, these tents feature a stronger, heavier steel frame.

- 1.25"W square legs constructed of 1 mm pebble powder-coated steel frame
- ABS glass-filled nylon joints
- Crank-up canopy creates a taut, clean peak
- 10' canopy available in eight stock colors (see page 16), with full-bleed dye sublimation or with full-bleed UV printing (available online)
- 8' canopy available with full-bleed dye sublimation only



## 8' Deluxe Tent

Item #	Description	1	2-5	6-11	12-24
240829	Dye Sublimation Kit	1309.00	1283.00	1257.00	1217.00
Kit Includes: Tent Frame, Canopy, Stake Kit and Soft Carry Case with Wheels		USD MSRP (C)			

**Product Size** 96"W x 117.5"-130"H x 96"D  
**Dye Sub Graphic Size** View Online Template  
**Product Wt.** 58 lbs.

## 10' Deluxe Tent

Item #	Description	1	2-5	6-11	12-24
240621	Full-Color Imprint Kit (1 Location)	771.00	755.50	740.00	717.00
240622	Full-Color Imprint Kit (2 Locations)	852.00	835.00	818.00	792.50
240624	Full-Color Imprint Kit (4 Locations)	940.00	921.00	902.50	874.00
240629	Dye Sublimation Kit	1355.00	1328.00	1301.00	1260.00
Kit Includes: Tent Frame, Canopy, Stake Kit and Soft Carry Case with Wheels		USD MSRP (C)			

**Product Size** 118.5"W x 127"-139.5"H x 118.5"D  
**Imprint Graphic Size** Peak: 44"W x 24"H; Valance: 60"W x 8"H  
**Dye Sub Graphic Size** View Online Template  
**Product Wt.** 63.5 lbs.

Production Lead Time: 4 days for full-color imprint / 7 days for dye sublimation from final proof approval



## BEST

## 10' &amp; 20' PREMIUM TENTS

These Premium tents feature a strong aluminum frame with sturdy hexagon-shaped legs.

- 1.75" diameter hexagon legs constructed of 0.8 mm anodized aluminum frame
- ABS glass-filled nylon joints
- Crank-up canopy creates a taut, clean peak
- Stake kit and wheeled carry case included
- 10' canopy available in eight stock colors (see page 16), with full-bleed dye sublimation or with full-bleed UV printing (available online)
- 20' canopy available in white, cherry, cobalt, navy, black, or with full-bleed dye sublimation



## 10' Premium Tent

Item #	Description	1	2-5	6-11	12-24
240631	Full-Color Imprint Kit (1 Location)	909.00	891.00	872.50	845.50
240632	Full-Color Imprint Kit (2 Locations)	972.00	952.50	933.00	904.00
240634	Full-Color Imprint Kit (4 Locations)	1060.00	1039.00	1018.00	986.00
240639	Dye Sublimation Kit	1474.00	1445.00	1415.00	1371.00
Kit Includes: Tent Frame, Canopy, Stake Kit and Soft Carry Case with Wheels		USD MSRP (C)			

## 10' x 20' Premium Tent

Item #	Description	1	2-5	6-11	12-24
240571	Full-Color Imprint Kit (1 Location)	1172.00	1149.00	1125.00	1090.00
240572	Full-Color Imprint Kit (2 Locations)	1254.00	1229.00	1204.00	1166.00
240574	Full-Color Imprint Kit (4 Locations)	1418.00	1390.00	1361.00	1319.00
240578	Full-Color Imprint Kit (8 Locations)	1688.00	1654.00	1620.00	1570.00
240582	Full-Color Imprint Kit (12 Locations)	1709.00	1675.00	1641.00	1589.00
240583	Dye Sublimation Kit	2279.00	2233.00	2188.00	2119.00
Kit Includes: Tent Frame, Canopy, 2 Stake Kits and Soft Carry Case with Wheels		USD MSRP (C)			

**Description** **Product Size** **Imprint Graphic Size** **Dye Sub Graphic Size** **Product Wt.**  
 10' 118"W x 126.75"-139.25"H x 118"D Peak: 44"W x 24"H; Valance: 60"W x 8"H View Online Template 52 lbs.  
 10' x 20' 234.5"W x 126.75"-139.25"H x 118.25"D Peak: 44"W x 24"H; Valance: 60"W x 8"H View Online Template 92 lbs.

Production Lead Time: 4 days for full-color imprint / 7 days for dye sublimation from final proof approval



Signicade  
Deluxe

Signicade

### One Signboard, Two Sides.

Double-sided signboards have your artwork printed on both sides, making each signboard reversible.



Double-sided signboards available for Signicade Deluxe

## SIGNICADE® AND SIGNICADE® DELUXE A-FRAMES

With different sizes to choose from, these A-frames fit a variety of spaces.

- Maintenance-free and weather-resistant
- Folds flat for transport or storage



### Signicade Deluxe A-Frame

Item #	Description	1	2-5	6-11	12-24
210121	Single-Sided Kit	238.00	230.60	219.90	214.40
210122	Double-Sided Kit	254.50	247.25	235.50	230.00
Kit Includes: Black or White Hardware and 2 Single- or Double-Sided Graphics				USD MSRP (C)	

Product Size	Finished Graphic Size	Product Wt.	Media
27"W x 38.5"H x 19"D	24"W x 36"H	21 lbs.	4 mm Corrugated Plastic

**FRAME COLORS** Black White

Production Lead Time: 2 days from final proof approval

### Signicade A-Frame

Item #	Description	1	2-5	6-11	12-24
210133	Kit	216.60	210.10	200.20	195.30
Kit Includes: Orange, Yellow or White Hardware, 2 Single-Sided Graphics, 2 Strips of Hook and 2 Strips of Loop				USD MSRP (C)	

Product Size	Finished Graphic Size	Product Wt.	Media
24.5"W x 42"H x 31"D	24"W x 36"H	20 lbs.	4 mm Corrugated Plastic

**FRAME COLORS** Orange Yellow White

Production Lead Time: 2 days from final proof approval

## Features & Benefits



Plastic base won't rust, making it great for outdoor use.



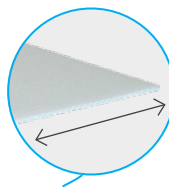
Convenient molded handle makes it easy to move.



Frames can be filled with water or sand for stability.



Signboards are easy to swap out to accommodate frequent message changes.



Stakes (sold separately) slide into fluted openings along the width of the signboard.

### Corrugated Plastic Sign

Item #	Description	1	2-5	6-11	12-24
271110	36"W x 24"H Single-Sided	27.30	26.48	25.66	24.84
271111	36"W x 24"H Double-Sided	35.85	34.77	33.70	32.62
271113	24"W x 18"H Single-Sided	18.10	17.56	17.01	16.47
271114	24"W x 18"H Double-Sided	23.65	22.94	22.23	21.52
USD MSRP (C)					

Production Lead Time: 2 days from final proof approval

## CORRUGATED PLASTIC SIGN

Great for use on lawns, this sign gives you a simple, inexpensive way to get your message noticed.

- Constructed of 4 mm corrugated plastic
- Full-color artwork can be printed on one or both sides
- Custom sizes and shapes available (call for quote; restrictions may apply)
- Corrugated plastic can be recycled after use



### STANDARD STEP STAKE

- Installation is quick and easy

#### Standard Step Stake

Item #	Description	1-10	11-20	21-30	31+
381501	Standard Step Stake	2.80	2.74	2.66	2.60
USD MSRP (C)					

Hardware Lead Time: Ships same day when ordered before 2 p.m. Central

Prices are subject to change; visit [showdowndisplays.com](http://showdowndisplays.com) for the most current pricing.  
Setup fee: \$20.00(G); no setup fee on orders placed via our website. View current graphic templates, assembly videos and instructions on our website.

[showdowndisplays.com](http://showdowndisplays.com)



## STORM MAT

This water-absorbent mat makes a great first impression.

- Absorbs up to 1.5 gallons of liquid per square yard
- Easy to clean using a vacuum, steam cleaner or hose
- UV-resistant and treated with Stainstopper™
- Mat sizes are not exact; allow 3-5% size variance
- Not eligible for Rush Service

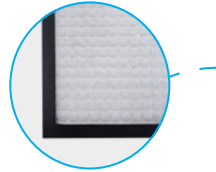


### Storm Mat

Item #	Description	Product Wt.	1	2-5	6-10	11-25
259030	2' x 3'	4 lbs.	402.50	330.00	285.75	273.75
259031	3' x 5'	10 lbs.	458.25	375.75	325.25	311.50
259032	4' x 6'	14 lbs.	581.00	476.50	412.50	395.00
USD MSRP (C)						

Light colors show dirt easily and are not recommended for background colors. Item has limited number of available colors (56). We cannot guarantee color matching. Test strip/match print/test grid not available.

Production Lead Time: 7 days from final proof approval



Constructed of 65 mil nitrate rubber with needle-punched polyester carpet.



## GALLERY PRINTS & FLOATING GALLERY PRINTS

Turn your favorite photos and memories into decoration pieces.

- Print is gallery-wrapped around frame to maximize graphic space
- Prints come with a finished back; hanging hardware is included
- Floating Gallery Prints allow the print to pop within a black frame
- Prints can be displayed vertically or horizontally
- Artwork is printed with UV protected ink on durable canvas fabric
- Wood frames are sourced from sustainable Appalachian hardwood lumber



### Gallery Prints & Floating Gallery Prints

Item #	Description	Product Wt.	1	2-5	6-11	12-24
325401	11" x 14" Gallery Print	1.5 lbs.	88.10	85.45	81.95	79.30
325411	11" x 14" Floating Gallery Print	3 lbs.	144.80	140.50	134.70	130.30
325402	12" x 12" Gallery Print	1.5 lbs.	94.40	91.55	87.80	84.95
325412	12" x 12" Floating Gallery Print	3 lbs.	163.60	158.70	152.10	147.20
325403	16" x 20" Gallery Print	2.4 lbs.	113.30	109.90	105.40	102.00
325413	16" x 20" Floating Gallery Print	4.8 lbs.	201.40	195.40	187.30	181.30
USD MSRP (C)						

Production Lead Time: 3 days from final proof approval



11" x 14" Floating Gallery Print



16" x 20" Gallery Print

## ACRYLIC PRINTS

Create eye-catching decor with modern acrylic prints that offer sharp image detail and radiant colors.

- High-quality print on 0.118" acrylic
- Polished edge brings vibrancy and depth to the print
- Print is single-sided
- No assembly required



Hidden Shadow Mount hardware lets you hang your art on the wall like a picture frame.



Acrylic prints provide additional depth to images.

### Acrylic Prints

Item #	Description	Product Wt.	1	2-5	6-11	12-24
264462	11" x 14"	1.27 lbs.	56.65	54.95	54.40	53.80
264463	12" x 12"	1.2 lbs.	60.40	58.60	58.00	57.40
264465	16" x 20"	3.62 lbs.	100.70	97.70	96.70	95.70
264467	24" x 36"	7.4 lbs.	188.80	183.10	181.20	179.40
USD MSRP (C)						

Production Lead Time: 2 days from final proof approval

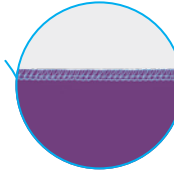


## When choosing a floor display have you considered...

- What is the size of your space?
- How will this display be transported?
- Will you be changing out your look and message?



12-Quad Classic



Graphic panels are finished with white stitching.



Shelf has rounded corners and supports up to 15 lbs.



Deluxe GeoMetrix pegs hold up to six panels each.

## GOOD

### DELUXE GEOMETRIX DISPLAY

A strong, durable frame supports multiple graphic panels and shelves so you have countless options for setting up a creative display.

- Setup and teardown can be done in seconds
- Artwork is dye sublimated on polyester double knit
- Aluminum frame with nylon plastic hubs
- US Patent #9214104



### Deluxe GeoMetrix Displays

Item #	Description	1	2-5	6-11	12-24
342010	3-Quad Tower Kit	780.00	765.00	750.00	735.00
342004	9-Quad Header Kit	1710.00	1670.00	1635.00	1595.00
342000	12-Quad Classic Kit	2020.00	1980.00	1945.00	1905.00
Kit Includes: Frame, Graphic Panels, Internal Shelf(s) and Soft Carry Case		USD MSRP (C)			
Shelves do not fit in provided soft carry case. See website for shelf soft carry case.					

Description	Product Size	Finished Graphic Size	Product Wt.	Media
3-Quad Tower	31.25" W x 89.5" H x 13" D	View Online Template	11 lbs.	Polyester Double Knit
9-Quad Header	90" W x 89.5" H x 13" D	View Online Template	27 lbs.	Polyester Double Knit
12-Quad Classic	118" W x 89.5" H x 13" D	View Online Template	30.5 lbs.	Polyester Double Knit

Production Lead Time: 4 days from final proof approval

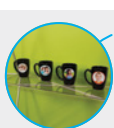


3-Quad Tower



9-Quad Header

## Add-Ons



### Deluxe GeoMetrix Internal Shelves

US Patent #D804,228

Item #	Description	1	2-5	6-11	12-24
338050	Gray Internal Shelf	139.00	136.00	132.00	128.00
338068	Clear Internal Shelf	149.00	145.00	140.00	136.00
Each shelf supports up to 15 lbs.		USD MSRP (C)			

### Ultimate LED Double Light Kit

Item #	Description	1	2-5	6-11	12-24
150121	Kit	339.75	329.50	319.25	309.25
Kit Includes: 2 Lights, 2 Clamps, 2 Clips, USB Adapter and Soft Carry Case		USD MSRP (C)			

Hardware Lead Time: Ships same day when ordered before 2 p.m. Central



Prices are subject to change; visit [showdowndisplays.com](http://showdowndisplays.com) for the most current pricing.  
Setup fee: \$20.00(G); no setup fee on orders placed via our website. View current graphic templates, assembly videos and instructions on our website.  
[showdowndisplays.com](http://showdowndisplays.com)





Compatible displays can be hinged together using the included EuroFit Connector, item #255122.  
US Patent #9637963

## BETTER

### EUROFIT WALLS

The ever-popular EuroFit line offers many elegant and versatile display solutions.

- Artwork is vibrantly dye sublimated on recycled polyester knit
- Hinge together separate EuroFit displays with the EuroFit Connector
- Create modular layouts with limitless possibilities



Get a green screen compatible backdrop printed as PMS 354C; available online.

NEW  
RECYCLED  
POLYESTER  
KNIT



Sustainable recycled polyester knit is made with REPREEVE® fibers recycled from plastic bottles.



Biodegradable media kits are available online.

#### 90"H EuroFit Straight Wall

Item #	Description	1	2-5	6-11	12-24
256215	3'W Kit	418.00	405.00	393.00	380.00
256233	5'W Kit	630.00	612.00	592.00	574.00
255180	8'W Kit	957.00	928.00	899.00	871.00
256251	10'W Kit	1680.00	1645.00	1595.00	1565.00
256427	20'W Kit	3305.00	3265.00	3145.00	3105.00

Kit Includes: Hardware, Graphic Cover, EuroFit Connector and Soft Carry Case

20' Display Includes: Hardware, Graphic Cover, 2 EuroFit Connectors and 2 Soft Carry Cases

USD MSRP (C)

Description	Product Size	Finished Graphic Size	Product Wt.	Media
3'W	36.5"W x 91.25"H x 19"D	View Online Template	10.3 lbs.	Recycled Polyester Knit
5'W	60.5"W x 91.25"H x 19"D	View Online Template	12.6 lbs.	Recycled Polyester Knit
8'W	96.5"W x 91.25"H x 19"D	View Online Template	18 lbs.	Recycled Polyester Knit
10'W	115.5"W x 91.25"H x 19"D	View Online Template	21.25 lbs.	Recycled Polyester Knit
20'W	231"W x 91.25"H x 19"D	View Online Template	42.75 lbs.	Recycled Polyester Knit

#### 72"H EuroFit Straight Wall

Item #	Description	1	2-5	6-11	12-24
256203	2'W Kit	262.00	254.00	247.00	238.00
256212	3'W Kit	346.00	332.00	319.00	299.00

Kit Includes: Hardware, Graphic Cover, EuroFit Connector and Soft Carry Case

USD MSRP (C)

Description	Product Size	Finished Graphic Size	Product Wt.	Media
2'W	24.5"W x 72"H x 19"D	View Online Template	7.5 lbs.	Recycled Polyester Knit
3'W	36.5"W x 72"H x 19"D	View Online Template	8.25 lbs.	Recycled Polyester Knit

Production Lead Time: 4 days from final proof approval

Prices are subject to change; visit [showdowndisplays.com](http://showdowndisplays.com) for the most current pricing.

Setup fee: \$20.00(G); no setup fee on orders placed via our website. View current graphic templates, assembly videos and instructions on our website.

[showdowndisplays.com](http://showdowndisplays.com)



10' with face graphic panel

8' with wrap graphic panel

NEW  
RECYCLED  
POLYESTER  
KNIT

## BEST

### SPLASH DISPLAY

This pop-up display transforms from a compact unit to an impressive backdrop in minutes.

- Graphic panels are available in recycled polyester knit and block-out fabric
- Recycled polyester knit is a 100% recycled media made with REPREEVE® fibers
- Hook-and-loop fasteners make graphic panel installation simple
- Aluminum frame with nylon plastic hubs
- US Patent #9214104



### 8' Straight Splash

Item #	Description	Product Wt.	1	2-5	6-11	12-24
341004	8' Recycled Polyester Knit Face Kit	19.25 lbs.	1150.00	1130.00	1105.00	1085.00
342208	8' Block-Out Fabric Face Kit	20 lbs.	1245.00	1220.00	1195.00	1170.00
341005	8' Recycled Polyester Knit Wrap Kit	20 lbs.	1380.00	1360.00	1335.00	1315.00
342209	8' Block-Out Fabric Wrap Kit	20.8 lbs.	1480.00	1455.00	1430.00	1410.00

Kit Includes: Frame, Graphic Panel and Soft Carry Case

USD MSRP (C)

#### Product Size

90"W x 89.5"H x 12.25"D

#### Finished Graphic Size

View Online Template

### 10' Straight Splash

Item #	Description	Product Wt.	1	2-5	6-11	12-24
341008	10' Recycled Polyester Knit Face Kit	23.75 lbs.	1380.00	1360.00	1335.00	1315.00
342212	10' Block-Out Fabric Face Kit	24.5 lbs.	1480.00	1455.00	1430.00	1410.00
341009	10' Recycled Polyester Knit Wrap Kit	24.75 lbs.	1610.00	1590.00	1565.00	1545.00
342213	10' Block-Out Fabric Wrap Kit	26 lbs.	1700.00	1675.00	1655.00	1630.00

Kit Includes: Frame, Graphic Panel and Soft Carry Case

USD MSRP (C)

#### Product Size

119"W x 89.5"H x 12.25"D

#### Finished Graphic Size

View Online Template

Production Lead Time: 4 days from final proof approval

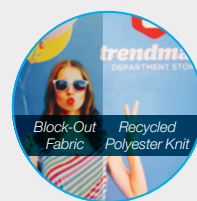
### Kit Options



**Face Graphic Kit**  
Graphic panel covers the front of the frame.



**Wrap Graphic Kit**  
Graphic panel covers the front and two sides of the frame. Back of the frame is not covered.



#### BLOCK-OUT FABRIC

Block-out fabric is designed to prevent light from showing through the display. It is a good option for brightly lit areas.

#### RECYCLED POLYESTER KNIT

Sustainable recycled polyester knit is made with REPREEVE® fibers recycled from plastic bottles.

Prices are subject to change; visit [showdowndisplays.com](http://showdowndisplays.com) for the most current pricing.

Setup fee: \$20.00(G); no setup fee on orders placed via our website. View current graphic templates, assembly videos and instructions on our website.

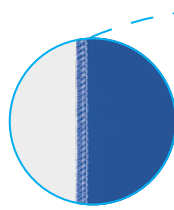
[showdowndisplays.com](http://showdowndisplays.com)



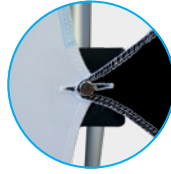
## MICRO GEOMETRIX DISPLAY

Create a variety of multidimensional displays in seconds with the Micro GeoMetrix.

- Lightweight aluminum frame with plastic hubs
- Artwork is dye sublimated on polyester double knit



Graphic panels are finished with white stitching.



Micro GeoMetrix pegs hold up to three panels each.



Buttonholes are reinforced with white stitching to prevent tearing.



### Micro GeoMetrix Classic

Item #	Description	1	2-5	6-11	12-24
337207	Kit	516.00	495.50	480.00	454.00
Kit Includes: Nine-Quad Square Frame, 5 Graphic Panels and Soft Carry Case				USD MSRP (C)	

Product Size	Finished Graphic Size	Product Wt.	Media
46"W x 46.75"H x 9.62"D	View Online Template	9.25 lbs.	Polyester Double Knit

Production Lead Time: 4 days from final proof approval

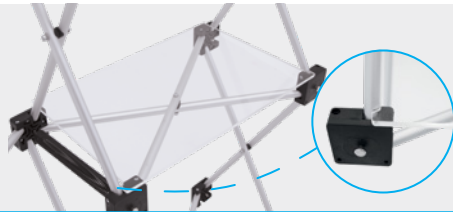
### Add-On

#### Micro GeoMetrix Shelf

Item #	Description	1	2-5	6-11	12-24
338069	Straight Internal Clear Shelf	45.43	43.61	42.25	39.98
Each shelf supports up to 5 lbs.					USD MSRP (C)
Compatible with frames equipped with locking arms only.					

Hardware Lead Time: Ships same day when ordered before 2 p.m. Central

Shown on a 6' Standard throw shown in navy blue and 57" LazerLine runner shown in mulberry (throw and runner sold separately)



## MINI TABLETOP DISPLAYS

These displays fit into small areas, making them perfect for tables and countertops.

- Lightweight and portable
- Warranties range between six months and one year (see website for details)
- Kit contents vary (see website for details)

### Mini Retractors

Item #	Description	1	2-5	6-11	12-24
262014	Deluxe Mini Kit	75.55	72.55	70.25	66.50
210242	Large Mini Promo Kit	65.40	62.80	60.80	57.55
261130	24" Economy Tabletop No-Curl Hybrid Media Kit	178.30	167.60	160.50	149.80
262160	24" Economy Tabletop No-Curl Opaque Fabric Kit	178.30	167.60	160.50	149.80
				USD MSRP (C)	

Product Size	Finished Graphic Size
Sizes Vary	View Online Template

Production Lead Time: 2-4 days from final proof approval

Hardware Lead Time: Ships same day when ordered before 2 p.m. Central

### Mini Displays

Item #	Description	1	2-5	6-11	12-24
280370	EuroFit Mini Kit	97.30	93.40	90.45	85.65
210032	Mini X Banner Display Kit	37.62	36.12	34.99	33.11
304757	Base for One 4" x 6" Stick Flag	2.45	2.25	2.11	1.96
304758	Base for Two 4" x 6" Stick Flags	3.47	3.19	2.98	2.78
304759	Base for Three 4" x 6" Stick Flags	3.47	3.19	2.98	2.78
Stick Flags sold separately (see website).				USD MSRP (C)	

Prices are subject to change; visit [showdowndisplays.com](http://showdowndisplays.com) for the most current pricing.

Setup fee: \$20.00(G); no setup fee on orders placed via our website. View current graphic templates, assembly videos and instructions on our website.

[showdowndisplays.com](http://showdowndisplays.com)

# SHOWDOWN DISPLAYS IS FOCUSED ON SUSTAINABILITY

SILVER

2023  
**ecovadis**  
Sustainability  
Rating

**We are committed to delivering sustainable solutions.**

Here are just a few examples:

- Achieved the EcoVadis Silver Sustainability Rating
- Broadened the range of sustainable products offered
- Established environmental policies on waste & recycling, plastic, and energy use
- Implemented packaging that has a reduced environmental impact by using less ink to make packaging more recyclable
- Created a Sustainability Committee that has defined key performance indicators (KPIs) for social accountability

**Discover our sustainable products!**



This icon under a product name means sustainable options are available.

**Take the Plastic Free pledge!**



**NEIGHBORHOOD  
CLEANUP DAY**



## VINYL & FABRIC BANNERS NO SETUP FEES ALL YEAR

PROMO CODE **S24BFSU12**



- NO setup fees!\*
- Wide variety of materials.
- Available for delivery in as little as two days.

See pages 62-66 in our 2024 Product Guide for details.

\*Must use promo code when ordering